

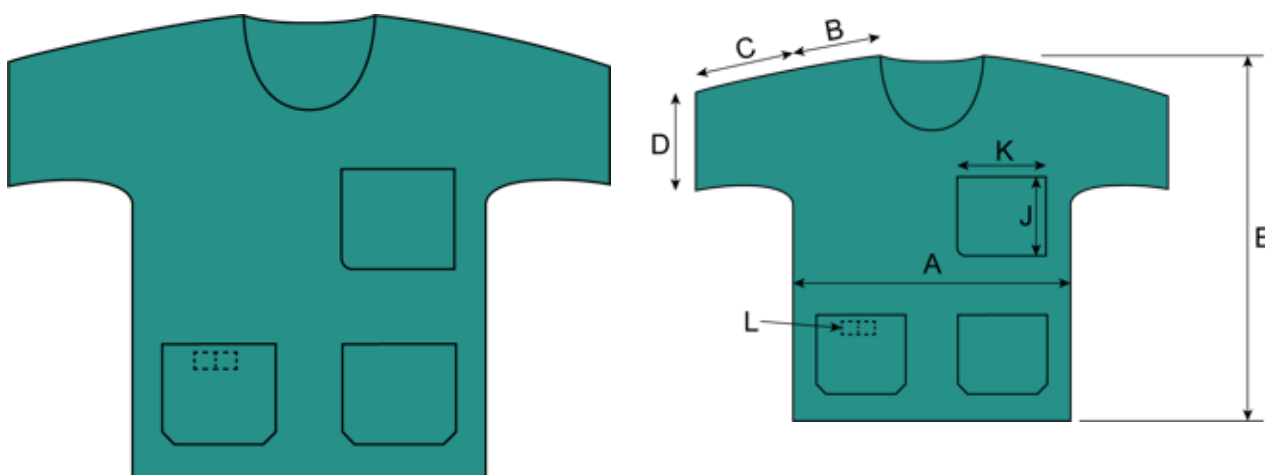
839109 Scrub Shirt

Scrub Shirt

Product details

Size :	S
Descriptive feature :	Basic
Colour :	Green
Sterile :	Non-sterile
Brand :	BARRIER

Images



Delivered items

839109-00

Sales released in: Austria, Bahrain, Belgium, Bulgaria, Chile, Côte d'Ivoire, Croatia, Cyprus, Czechia, Denmark, Djibouti, Egypt, Estonia, Ethiopia, Faroe Islands, Finland, France, Germany, Gibraltar, Greece, Hong Kong, Hungary, Iraq, Ireland, Italy, Japan, Jordan, Kenya, Korea (the Republic of), Kuwait, Latvia, Lebanon, Libya, Liechtenstein, Lithuania, Luxembourg, Macao, Malta, Mauritius, Netherlands, New Zealand, Nigeria, Norway, Oman, Portugal, Qatar, Romania, Russian Federation, Sierra Leone, Slovakia, Slovenia, South Africa, Spain, Sudan, Sweden, Switzerland, Syrian Arab Republic, Tanzania, United Republic of, Uganda, United Kingdom of Great Britain and Northern Ireland, Yemen

Country of origin: China

Shelf life: 5 years

Sterilization method: Non-sterile

Production Responsibility: Copious International Inc., Wei 11 Road, Huada Street, New City, Heyuan, Guangdong, 517000, China

Packing information: First packaging layer is a plastic liner/bag. Second layer is a corrugated board transport box.

Is suitable for Tray: No

Find out more at www.molnlycke.com

Mölnlycke Health Care AB, Box 13080, Gamlestadsvägen 3 C, SE-402 52 Göteborg, Sweden. Phone +46 31 722 30 00.
The Mölnlycke trademarks, names and logotypes are registered globally to one or more of the Mölnlycke Health Care Group of Companies.
©2023 Mölnlycke Health Care AB. All rights reserved.



Packing level	Quantity	GS1 Code / UDI-DI	Width x Length x Height	Vol	Weight gross / net
Piece	1	7332551874155			
Transport box	45	7332551874179	279x330x229 mm	21.1 dm3	2.0 / 1.7 kg
Pallet	2520	7332551874162	800x1200x1744 mm		

Material

Animal tissues :	No
Human blood derivatives :	No
Natural rubber latex :	No
Medicinal substances :	No
Phthalates :	No
Polyvinyl chloride :	No

Product Composition Wearing Apparel, Shirts

Product Component	Composition
Main material	Polypropylene SMS (Spunbond Meltblown Spunbond) nonwoven 35 g/m ²
Sewing thread	Polyester, Polyamide (Nylon)

Technical

Dimension

Dimension reference	Dimension text	Dimension value
A	Chest width	53 cm
B	Shoulder width	20,5 cm
C	Sleeve length	14 cm
D	Sleeve width	20,5 cm
E	Length of back piece	75,5 cm
J	Upper Pocket Length	16 cm
K	Upper Pocket Width	15,5 cm
L	Buckle Length	5 cm

Find out more at www.molnlycke.com

Mölnlycke Health Care AB, Box 13080, Gamlestadsvägen 3 C, SE-402 52 Göteborg, Sweden. Phone +46 31 722 30 00.
The Mölnlycke trademarks, names and logotypes are registered globally to one or more of the Mölnlycke Health Care Group of Companies.
©2023 Mölnlycke Health Care AB. All rights reserved.



Disposal instructions

Non-hazardous waste used BARRIER products and sterility barriers should, in the majority of cases, be classified as non-hazardous waste. They contain high amounts of energy and are well suited for incineration. BARRIER products do not contain any hazardous substances that can leach out if the products are land filled. Transport boxes are designed to fit existing recovery systems. The new BARRIER packaging system complies with the Packaging Waste Directive of the European Union.

Storage instructions

Mölnlycke Health Care recommends that BARRIER products are stored under normal storage conditions. All layers of packaging should be kept intact until access to the underlying layers is needed. Storage facilities for products only protected by the sterility barrier should be kept under conditions where low level of particulate air contamination prevail, so that it would not constitute a risk to the patient when the package is opened and the product is used.

Classifications

Regulation type(s)	MDR Class I ns	Locally Regulated	Locally Regulated	Locally Regulated
Intended Purpose :	Scrub Apparels, used by staff as working clothes, are intended to protect the patient from the staff's own bacterial flora by providing a barrier.	Scrub Apparels, used by staff as working clothes, are intended to protect the patient from the staff's own bacterial flora by providing a barrier.	Scrub Apparels, used by staff as working clothes, are intended to protect the patient from the staff's own bacterial flora by providing a barrier.	Scrub Apparels, used by staff as working clothes, are intended to protect the patient from the staff's own bacterial flora by providing a barrier.
MDR Classification Rule :	1			
Conformity Annexes :	IV			
Measuring Function :	No			
Notified body medical devices/PPE :	MPA	Local Authority Jordan	Local Authority MEA	Local Authority Americas

Find out more at www.molnlycke.com

Mölnlycke Health Care AB, Box 13080, Gamlestadsvägen 3 C, SE-402 52 Göteborg, Sweden. Phone +46 31 722 30 00.
The Mölnlycke trademarks, names and logotypes are registered globally to one or more of the Mölnlycke Health Care Group of Companies.
©2023 Mölnlycke Health Care AB. All rights reserved.



Regulation type(s)	MDR Class I ns	Locally Regulated	Locally Regulated	Locally Regulated
Indication for use FDA :	Scrub Apparels, used by staff as working clothes, are intended to protect the patient from the staffs own bacterial flora by providing a barrier.	Scrub Apparels, used by staff as working clothes, are intended to protect the patient from the staffs own bacterial flora by providing a barrier.	Scrub Apparels, used by staff as working clothes, are intended to protect the patient from the staffs own bacterial flora by providing a barrier.	Scrub Apparels, used by staff as working clothes, are intended to protect the patient from the staffs own bacterial flora by providing a barrier.
Regulatory Released :	Austria, Belgium, Bulgaria, Croatia, Cyprus, Czechia, Denmark, Estonia, Faroe Islands, Finland, France, Germany, Gibraltar, Greece, Hungary, Ireland, Italy, Latvia, Liechtenstein, Lithuania, Luxembourg, Malta, Netherlands, Norway, Portugal, Romania, Slovakia, Slovenia, Spain, Sweden, Switzerland, United Kingdom of Great Britain and Northern Ireland	Jordan	Bahrain, Ethiopia, Iraq, Kenya, Lebanon, Libya, Mauritius, Oman, Qatar, Sierra Leone, South Africa, Tanzania, United Republic of, Uganda	Chile

Find out more at www.molnlycke.com

Mölnlycke Health Care AB, Box 13080, Gamlestadsvägen 3 C, SE-402 52 Göteborg, Sweden. Phone +46 31 722 30 00.
 The Mölnlycke trademarks, names and logotypes are registered globally to one or more of the Mölnlycke Health Care Group of Companies.
 ©2023 Mölnlycke Health Care AB. All rights reserved.



Classifications

Regulation type(s)	Locally Regulated	Locally Regulated	Locally Regulated	Locally Regulated
Intended Purpose :	Scrub Apparels, used by staff as working clothes, are intended to protect the patient from the staff's own bacterial flora by providing a barrier.	Scrub Apparels, used by staff as working clothes, are intended to protect the patient from the staff's own bacterial flora by providing a barrier.	Scrub Apparels, used by staff as working clothes, are intended to protect the patient from the staff's own bacterial flora by providing a barrier.	Scrub Apparels, used by staff as working clothes, are intended to protect the patient from the staff's own bacterial flora by providing a barrier.
MDR Classification Rule :				
Conformity Annexes :				
Measuring Function :				
Notified body medical devices/PPE :	Local Authority Egypt	Local Authority South Korea	Local Authority Kuwait	Local Authority APAC
Indication for use FDA :	Scrub Apparels, used by staff as working clothes, are intended to protect the patient from the staffs own bacterial flora by providing a barrier.	Scrub Apparels, used by staff as working clothes, are intended to protect the patient from the staffs own bacterial flora by providing a barrier.	Scrub Apparels, used by staff as working clothes, are intended to protect the patient from the staffs own bacterial flora by providing a barrier.	Scrub Apparels, used by staff as working clothes, are intended to protect the patient from the staffs own bacterial flora by providing a barrier.
Regulatory Released :	Egypt	Korea (the Republic of)	Kuwait	Hong Kong, Macao, New Zealand

Classifications

Regulation type(s)	Non Medical Device
Intended Purpose :	Scrub Apparels, used by staff as working clothes, are intended to protect the patient from the staff's own bacterial flora by providing a barrier.
MDR Classification Rule :	
Conformity Annexes :	
Measuring Function :	
Notified body medical devices/PPE :	PMDA (Japan)
Indication for use FDA :	Scrub Apparels, used by staff as working clothes, are intended to protect the patient from the staffs own bacterial flora by providing a barrier.
Regulatory Released :	Japan

Find out more at www.molnlycke.com

Mölnlycke Health Care AB, Box 13080, Gamlestadsvägen 3 C, SE-402 52 Göteborg, Sweden. Phone +46 31 722 30 00.
 The Mölnlycke trademarks, names and logotypes are registered globally to one or more of the Mölnlycke Health Care Group of Companies.
 ©2023 Mölnlycke Health Care AB. All rights reserved.



Applied standards : The standards presented below is a selection of the most essential standards that are adhered to.

EN ISO 20417, EN 62366, EN ISO 9001, EN ISO 13485, EN ISO 10993-1, EN ISO 10993-5, EN ISO 15223-1, ISO 15223-2, EN ISO 10993-10, ISO 14001

GMDN Code (Global Medical Device Nomenclature)

58382 Scrub suit, single-use, non-sterile

UNSPSC

42131608 Medical staff scrubs

Commodity Code

6210109800 Other garments of nonwoven material

CE Responsibility

Mölnlycke Health Care AB, Gamlestadsvägen 3c, Box 13080, SE-402 52 Göteborg Sweden

Basic UDIDI

733243000000000099KM

Find out more at www.molnlycke.com

Mölnlycke Health Care AB, Box 13080, Gamlestadsvägen 3 C, SE-402 52 Göteborg, Sweden. Phone +46 31 722 30 00.
The Mölnlycke trademarks, names and logotypes are registered globally to one or more of the Mölnlycke Health Care Group of Companies.

©2023 Mölnlycke Health Care AB. All rights reserved.



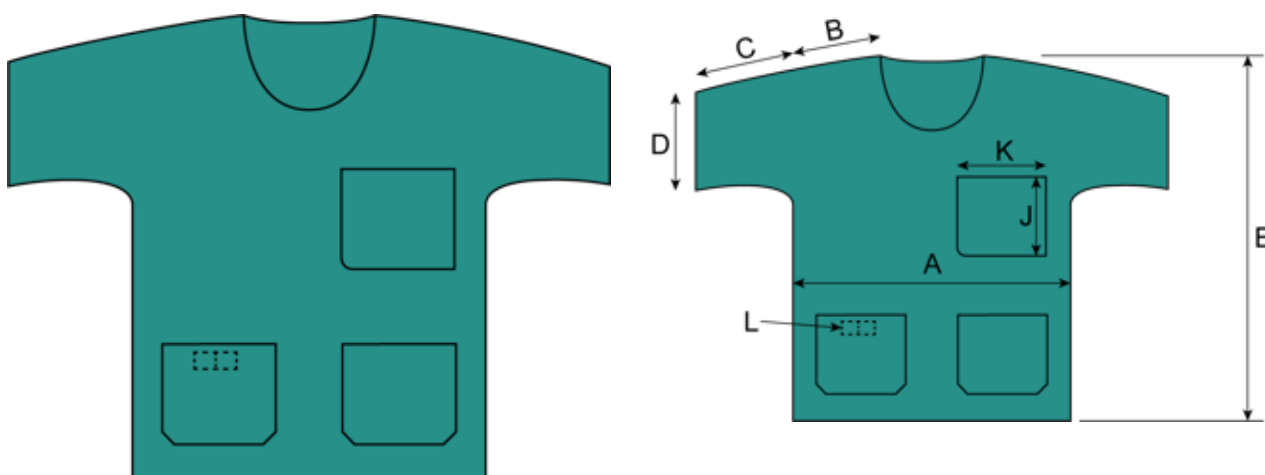
839209 Scrub Shirt

Scrub Shirt

Product details

Size :	M
Descriptive feature :	Basic
Colour :	Green
Sterile :	Non-sterile
Brand :	BARRIER

Images



Delivered items

839209-00

Sales released in: Austria, Bahrain, Belgium, Bulgaria, Chile, Côte d'Ivoire, Croatia, Cyprus, Czechia, Denmark, Djibouti, Egypt, Estonia, Ethiopia, Faroe Islands, Finland, France, Germany, Gibraltar, Greece, Hong Kong, Hungary, Iraq, Ireland, Italy, Japan, Jordan, Korea (the Republic of), Kuwait, Latvia, Lebanon, Libya, Liechtenstein, Lithuania, Luxembourg, Macao, Malta, Mauritius, Netherlands, New Zealand, Nigeria, Norway, Oman, Portugal, Qatar, Romania, Russian Federation, Sierra Leone, Slovakia, Slovenia, South Africa, Spain, Sudan, Sweden, Switzerland, Syrian Arab Republic, Tanzania, United Republic of, Uganda, United Kingdom of Great Britain and Northern Ireland, Yemen

Country of origin: China

Shelf life: 5 years

Sterilization method: Non-sterile

Production Responsibility: Copious International Inc., Wei 11 Road, Huada Street, New City, Heyuan, Guangdong, 517000, China

Packing information: First packaging layer is a plastic liner/bag. Second layer is a corrugated board transport box.

Is suitable for Tray: No

Find out more at www.molnlycke.com

Mölnlycke Health Care AB, Box 13080, Gamlestadsvägen 3 C, SE-402 52 Göteborg, Sweden. Phone +46 31 722 30 00.
The Mölnlycke trademarks, names and logotypes are registered globally to one or more of the Mölnlycke Health Care Group of Companies.
©2023 Mölnlycke Health Care AB. All rights reserved.

Packing level	Quantity	GS1 Code / UDI-DI	Width x Length x Height	Vol	Weight gross / net
Piece	1	7332551874193			
Transport box	45	7332551874216	279x330x229 mm	21.1 dm ³	2.2 / 1.8 kg
Pallet	2520	7332551874209	800x1200x1744 mm		

Material

Animal tissues :	No
Human blood derivatives :	No
Natural rubber latex :	No
Medicinal substances :	No
Phthalates :	No
Polyvinyl chloride :	No

Product Composition Wearing Apparel, Shirts

Product Component	Composition
Main material	Polypropylene SMS (Spunbond Meltblown Spunbond) nonwoven 35 g/m ²
Sewing thread	Polyester, Polyamide (Nylon)

Technical

Dimension

Dimension reference	Dimension text	Dimension value
A	Chest width	59 cm
B	Shoulder width	23,5 cm
C	Sleeve length	15 cm
D	Sleeve width	21 cm
E	Length of back piece	77 cm
J	Upper Pocket Length	16 cm
K	Upper Pocket Width	15,5 cm
L	Buckle Length	5 cm

Find out more at www.molnlycke.com

Mölnlycke Health Care AB, Box 13080, Gamlestadsvägen 3 C, SE-402 52 Göteborg, Sweden. Phone +46 31 722 30 00.
The Mölnlycke trademarks, names and logotypes are registered globally to one or more of the Mölnlycke Health Care Group of Companies.
©2023 Mölnlycke Health Care AB. All rights reserved.



Disposal instructions

Non-hazardous waste used BARRIER products and sterility barriers should, in the majority of cases, be classified as non-hazardous waste. They contain high amounts of energy and are well suited for incineration. BARRIER products do not contain any hazardous substances that can leach out if the products are land filled. Transport boxes are designed to fit existing recovery systems. The new BARRIER packaging system complies with the Packaging Waste Directive of the European Union.

Storage instructions

Mölnlycke Health Care recommends that BARRIER products are stored under normal storage conditions. All layers of packaging should be kept intact until access to the underlying layers is needed. Storage facilities for products only protected by the sterility barrier should be kept under conditions where low level of particulate air contamination prevail, so that it would not constitute a risk to the patient when the package is opened and the product is used.

Classifications

Regulation type(s)	MDR Class I ns	Locally Regulated	Locally Regulated	Locally Regulated
Intended Purpose :	Scrub Apparels, used by staff as working clothes, are intended to protect the patient from the staff's own bacterial flora by providing a barrier.	Scrub Apparels, used by staff as working clothes, are intended to protect the patient from the staff's own bacterial flora by providing a barrier.	Scrub Apparels, used by staff as working clothes, are intended to protect the patient from the staff's own bacterial flora by providing a barrier.	Scrub Apparels, used by staff as working clothes, are intended to protect the patient from the staff's own bacterial flora by providing a barrier.
MDR Classification Rule :	1			
Conformity Annexes :	IV			
Measuring Function :	No			
Notified body medical devices/PPE :	MPA	Local Authority Jordan	Local Authority MEA	Local Authority Americas

Find out more at www.molnlycke.com

Mölnlycke Health Care AB, Box 13080, Gamlestadsvägen 3 C, SE-402 52 Göteborg, Sweden. Phone +46 31 722 30 00.
The Mölnlycke trademarks, names and logotypes are registered globally to one or more of the Mölnlycke Health Care Group of Companies.
©2023 Mölnlycke Health Care AB. All rights reserved.



Regulation type(s)	MDR Class I ns	Locally Regulated	Locally Regulated	Locally Regulated
Indication for use FDA :	Scrub Apparels, used by staff as working clothes, are intended to protect the patient from the staffs own bacterial flora by providing a barrier.	Scrub Apparels, used by staff as working clothes, are intended to protect the patient from the staffs own bacterial flora by providing a barrier.	Scrub Apparels, used by staff as working clothes, are intended to protect the patient from the staffs own bacterial flora by providing a barrier.	Scrub Apparels, used by staff as working clothes, are intended to protect the patient from the staffs own bacterial flora by providing a barrier.
Regulatory Released :	Austria, Belgium, Bulgaria, Croatia, Cyprus, Czechia, Denmark, Estonia, Faroe Islands, Finland, France, Germany, Gibraltar, Greece, Hungary, Ireland, Italy, Latvia, Liechtenstein, Lithuania, Luxembourg, Malta, Netherlands, Norway, Portugal, Romania, Slovakia, Slovenia, Spain, Sweden, Switzerland, United Kingdom of Great Britain and Northern Ireland	Jordan	Bahrain, Ethiopia, Iraq, Lebanon, Libya, Mauritius, Oman, Qatar, Sierra Leone, South Africa, Tanzania, United Republic of, Uganda	Chile

Find out more at www.molnlycke.com

Mölnlycke Health Care AB, Box 13080, Gamlestadsvägen 3 C, SE-402 52 Göteborg, Sweden. Phone +46 31 722 30 00.
The Mölnlycke trademarks, names and logotypes are registered globally to one or more of the Mölnlycke Health Care Group of Companies.

©2023 Mölnlycke Health Care AB. All rights reserved.



Classifications

Regulation type(s)	Locally Regulated	Locally Regulated	Locally Regulated	Locally Regulated
Intended Purpose :	Scrub Apparels, used by staff as working clothes, are intended to protect the patient from the staff's own bacterial flora by providing a barrier.	Scrub Apparels, used by staff as working clothes, are intended to protect the patient from the staff's own bacterial flora by providing a barrier.	Scrub Apparels, used by staff as working clothes, are intended to protect the patient from the staff's own bacterial flora by providing a barrier.	Scrub Apparels, used by staff as working clothes, are intended to protect the patient from the staff's own bacterial flora by providing a barrier.
MDR Classification Rule :				
Conformity Annexes :				
Measuring Function :				
Notified body medical devices/PPE :	Local Authority Egypt	Local Authority South Korea	Local Authority Kuwait	Local Authority APAC
Indication for use FDA :	Scrub Apparels, used by staff as working clothes, are intended to protect the patient from the staffs own bacterial flora by providing a barrier.	Scrub Apparels, used by staff as working clothes, are intended to protect the patient from the staffs own bacterial flora by providing a barrier.	Scrub Apparels, used by staff as working clothes, are intended to protect the patient from the staffs own bacterial flora by providing a barrier.	Scrub Apparels, used by staff as working clothes, are intended to protect the patient from the staffs own bacterial flora by providing a barrier.
Regulatory Released :	Egypt	Korea (the Republic of)	Kuwait	Hong Kong, Macao, New Zealand

Classifications

Regulation type(s)	Non Medical Device
Intended Purpose :	Scrub Apparels, used by staff as working clothes, are intended to protect the patient from the staff's own bacterial flora by providing a barrier.
MDR Classification Rule :	
Conformity Annexes :	
Measuring Function :	
Notified body medical devices/PPE :	PMDA (Japan)
Indication for use FDA :	Scrub Apparels, used by staff as working clothes, are intended to protect the patient from the staffs own bacterial flora by providing a barrier.
Regulatory Released :	Japan

Find out more at www.molnlycke.com

Mölnlycke Health Care AB, Box 13080, Gamlestadsvägen 3 C, SE-402 52 Göteborg, Sweden. Phone +46 31 722 30 00.
 The Mölnlycke trademarks, names and logotypes are registered globally to one or more of the Mölnlycke Health Care Group of Companies.
 ©2023 Mölnlycke Health Care AB. All rights reserved.



Applied standards : The standards presented below is a selection of the most essential standards that are adhered to.

EN ISO 20417, EN 62366, EN ISO 9001, EN ISO 13485, EN ISO 10993-1, EN ISO 10993-5, EN ISO 15223-1, ISO 15223-2, EN ISO 10993-10, ISO 14001

GMDN Code (Global Medical Device Nomenclature)

58382 Scrub suit, single-use, non-sterile

UNSPSC

42131608 Medical staff scrubs

Commodity Code

6210109800 Other garments of nonwoven material

CE Responsibility

Mölnlycke Health Care AB, Gamlestadsvägen 3c, Box 13080, SE-402 52 Göteborg Sweden

Basic UDIDI

733243000000000099KM

Find out more at www.molnlycke.com

Mölnlycke Health Care AB, Box 13080, Gamlestadsvägen 3 C, SE-402 52 Göteborg, Sweden. Phone +46 31 722 30 00.
The Mölnlycke trademarks, names and logotypes are registered globally to one or more of the Mölnlycke Health Care Group of Companies.

©2023 Mölnlycke Health Care AB. All rights reserved.



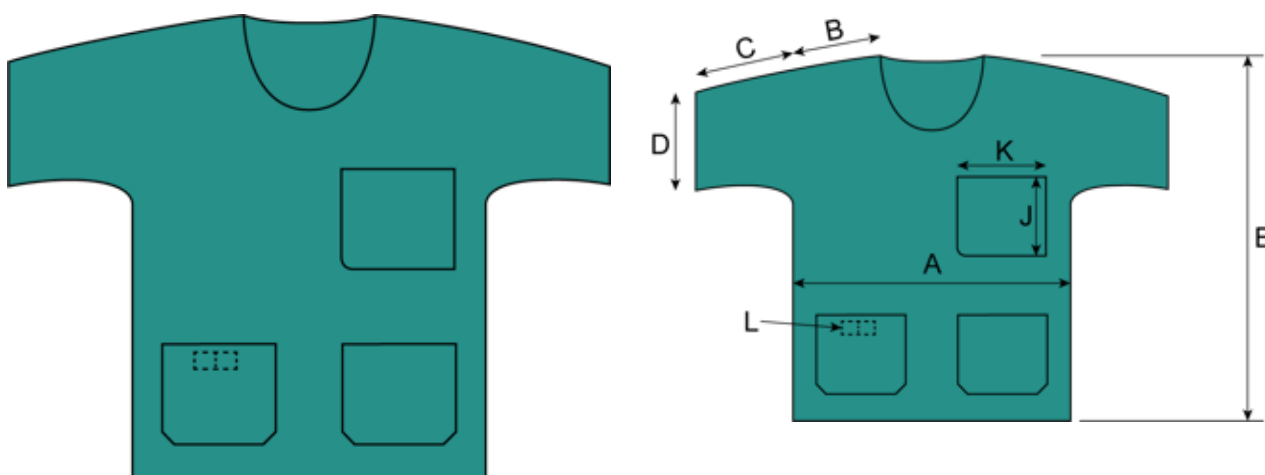
839309 Scrub Shirt

Scrub Shirt

Product details

Size :	L
Descriptive feature :	Basic
Colour :	Green
Sterile :	Non-sterile
Brand :	BARRIER

Images



Delivered items

839309-00

Sales released in: Austria, Bahrain, Belgium, Bulgaria, Chile, Croatia, Cyprus, Czechia, Denmark, Djibouti, Egypt, Estonia, Ethiopia, Faroe Islands, Finland, France, Germany, Gibraltar, Greece, Hong Kong, Hungary, Iraq, Ireland, Italy, Japan, Jordan, Kenya, Korea (the Republic of), Kuwait, Latvia, Lebanon, Libya, Liechtenstein, Lithuania, Luxembourg, Macao, Malta, Mauritius, Netherlands, New Zealand, Nigeria, Norway, Oman, Portugal, Qatar, Romania, Russian Federation, Sierra Leone, Slovakia, Slovenia, South Africa, Spain, Sudan, Sweden, Switzerland, Syrian Arab Republic, Tanzania, United Republic of, Uganda, United Kingdom of Great Britain and Northern Ireland, Yemen

Country of origin: China

Shelf life: 5 years

Sterilization method: Non-sterile

Production Responsibility: Copious International Inc., Wei 11 Road, Huada Street, New City, Heyuan, Guangdong, 517000, China

Packing information: First packaging layer is a plastic liner/bag. Second layer is a corrugated board transport box.

Is suitable for Tray: No

Find out more at www.molnlycke.com

Mölnlycke Health Care AB, Box 13080, Gamlestadsvägen 3 C, SE-402 52 Göteborg, Sweden. Phone +46 31 722 30 00.
The Mölnlycke trademarks, names and logotypes are registered globally to one or more of the Mölnlycke Health Care Group of Companies.
©2023 Mölnlycke Health Care AB. All rights reserved.

Packing level	Quantity	GS1 Code / UDI-DI	Width x Length x Height	Vol	Weight gross / net
Piece	1	7332551874230			
Transport box	45	7332551874254	330x343x229 mm	25.9 dm3	2.6 / 2.0 kg
Pallet	1890	7332551874247	800x1200x1744 mm		

Material

Animal tissues :	No
Human blood derivatives :	No
Natural rubber latex :	No
Medicinal substances :	No
Phthalates :	No
Polyvinyl chloride :	No

Product Composition Wearing Apparel, Shirts

Product Component	Composition
Main material	Polypropylene SMS (Spunbond Meltblown Spunbond) nonwoven 35 g/m ²
Sewing thread	Polyester, Polyamide (Nylon)

Technical

Dimension

Dimension reference	Dimension text	Dimension value
A	Chest width	63,5 cm
B	Shoulder width	24,5 cm
C	Sleeve length	16,5 cm
D	Sleeve width	21 cm
E	Length of back piece	78 cm
J	Upper Pocket Length	16 cm
K	Upper Pocket Width	15,5 cm
L	Buckle Length	5 cm

Find out more at www.molnlycke.com

Mölnlycke Health Care AB, Box 13080, Gamlestadsvägen 3 C, SE-402 52 Göteborg, Sweden. Phone +46 31 722 30 00.
 The Mölnlycke trademarks, names and logotypes are registered globally to one or more of the Mölnlycke Health Care Group of Companies.
 ©2023 Mölnlycke Health Care AB. All rights reserved.



Disposal instructions

Non-hazardous waste used BARRIER products and sterility barriers should, in the majority of cases, be classified as non-hazardous waste. They contain high amounts of energy and are well suited for incineration. BARRIER products do not contain any hazardous substances that can leach out if the products are land filled. Transport boxes are designed to fit existing recovery systems. The new BARRIER packaging system complies with the Packaging Waste Directive of the European Union.

Storage instructions

Mölnlycke Health Care recommends that BARRIER products are stored under normal storage conditions. All layers of packaging should be kept intact until access to the underlying layers is needed. Storage facilities for products only protected by the sterility barrier should be kept under conditions where low level of particulate air contamination prevail, so that it would not constitute a risk to the patient when the package is opened and the product is used.

Classifications

Regulation type(s)	MDR Class I ns	Locally Regulated	Locally Regulated	Locally Regulated
Intended Purpose :	Scrub Apparels, used by staff as working clothes, are intended to protect the patient from the staff's own bacterial flora by providing a barrier.	Scrub Apparels, used by staff as working clothes, are intended to protect the patient from the staff's own bacterial flora by providing a barrier.	Scrub Apparels, used by staff as working clothes, are intended to protect the patient from the staff's own bacterial flora by providing a barrier.	Scrub Apparels, used by staff as working clothes, are intended to protect the patient from the staff's own bacterial flora by providing a barrier.
MDR Classification Rule :	1			
Conformity Annexes :	IV			
Measuring Function :	No			
Notified body medical devices/PPE :	MPA	Local Authority Jordan	Local Authority MEA	Local Authority Americas

Find out more at www.molnlycke.com

Mölnlycke Health Care AB, Box 13080, Gamlestadsvägen 3 C, SE-402 52 Göteborg, Sweden. Phone +46 31 722 30 00.
The Mölnlycke trademarks, names and logotypes are registered globally to one or more of the Mölnlycke Health Care Group of Companies.
©2023 Mölnlycke Health Care AB. All rights reserved.



Regulation type(s)	MDR Class I ns	Locally Regulated	Locally Regulated	Locally Regulated
Indication for use FDA :	Scrub Apparels, used by staff as working clothes, are intended to protect the patient from the staffs own bacterial flora by providing a barrier.	Scrub Apparels, used by staff as working clothes, are intended to protect the patient from the staffs own bacterial flora by providing a barrier.	Scrub Apparels, used by staff as working clothes, are intended to protect the patient from the staffs own bacterial flora by providing a barrier.	Scrub Apparels, used by staff as working clothes, are intended to protect the patient from the staffs own bacterial flora by providing a barrier.
Regulatory Released :	Austria, Belgium, Bulgaria, Croatia, Cyprus, Czechia, Denmark, Estonia, Faroe Islands, Finland, France, Germany, Gibraltar, Greece, Hungary, Ireland, Italy, Latvia, Liechtenstein, Lithuania, Luxembourg, Malta, Netherlands, Norway, Portugal, Romania, Slovakia, Slovenia, Spain, Sweden, Switzerland, United Kingdom of Great Britain and Northern Ireland	Jordan	Bahrain, Ethiopia, Iraq, Kenya, Lebanon, Libya, Mauritius, Oman, Qatar, Sierra Leone, South Africa, Tanzania, United Republic of, Uganda	Chile

Find out more at www.molnlycke.com

Mölnlycke Health Care AB, Box 13080, Gamlestadsvägen 3 C, SE-402 52 Göteborg, Sweden. Phone +46 31 722 30 00.
 The Mölnlycke trademarks, names and logotypes are registered globally to one or more of the Mölnlycke Health Care Group of Companies.
 ©2023 Mölnlycke Health Care AB. All rights reserved.



Classifications

Regulation type(s)	Locally Regulated	Locally Regulated	Locally Regulated	Locally Regulated
Intended Purpose :	Scrub Apparels, used by staff as working clothes, are intended to protect the patient from the staff's own bacterial flora by providing a barrier.	Scrub Apparels, used by staff as working clothes, are intended to protect the patient from the staff's own bacterial flora by providing a barrier.	Scrub Apparels, used by staff as working clothes, are intended to protect the patient from the staff's own bacterial flora by providing a barrier.	Scrub Apparels, used by staff as working clothes, are intended to protect the patient from the staff's own bacterial flora by providing a barrier.
MDR Classification Rule :				
Conformity Annexes :				
Measuring Function :				
Notified body medical devices/PPE :	Local Authority Egypt	Local Authority South Korea	Local Authority Kuwait	Local Authority APAC
Indication for use FDA :	Scrub Apparels, used by staff as working clothes, are intended to protect the patient from the staffs own bacterial flora by providing a barrier.	Scrub Apparels, used by staff as working clothes, are intended to protect the patient from the staffs own bacterial flora by providing a barrier.	Scrub Apparels, used by staff as working clothes, are intended to protect the patient from the staffs own bacterial flora by providing a barrier.	Scrub Apparels, used by staff as working clothes, are intended to protect the patient from the staffs own bacterial flora by providing a barrier.
Regulatory Released :	Egypt	Korea (the Republic of)	Kuwait	Hong Kong, Macao, New Zealand

Classifications

Regulation type(s)	Non Medical Device
Intended Purpose :	Scrub Apparels, used by staff as working clothes, are intended to protect the patient from the staff's own bacterial flora by providing a barrier.
MDR Classification Rule :	
Conformity Annexes :	
Measuring Function :	
Notified body medical devices/PPE :	PMDA (Japan)
Indication for use FDA :	Scrub Apparels, used by staff as working clothes, are intended to protect the patient from the staffs own bacterial flora by providing a barrier.
Regulatory Released :	Japan

Find out more at www.molnlycke.com

Applied standards : The standards presented below is a selection of the most essential standards that are adhered to.

EN ISO 20417, EN 62366, EN ISO 9001, EN ISO 13485, EN ISO 10993-1, EN ISO 10993-5, EN ISO 15223-1, ISO 15223-2, EN ISO 10993-10, ISO 14001

GMDN Code (Global Medical Device Nomenclature)

58382 Scrub suit, single-use, non-sterile

UNSPSC

42131608 Medical staff scrubs

Commodity Code

6210109800 Other garments of nonwoven material

CE Responsibility

Mölnlycke Health Care AB, Gamlestadsvägen 3c, Box 13080, SE-402 52 Göteborg Sweden

Basic UDIDI

733243000000000099KM

Find out more at www.molnlycke.com

Mölnlycke Health Care AB, Box 13080, Gamlestadsvägen 3 C, SE-402 52 Göteborg, Sweden. Phone +46 31 722 30 00.
The Mölnlycke trademarks, names and logotypes are registered globally to one or more of the Mölnlycke Health Care Group of Companies.

©2023 Mölnlycke Health Care AB. All rights reserved.



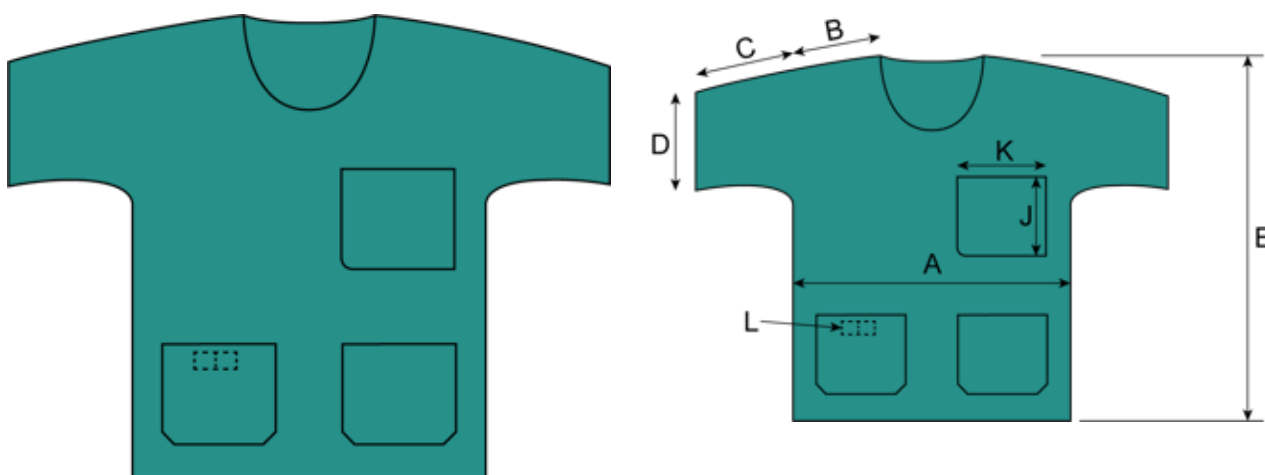
839409 Scrub Shirt

Scrub Shirt

Product details

Size :	XL
Descriptive feature :	Basic
Colour :	Green
Sterile :	Non-sterile
Brand :	BARRIER

Images



Delivered items

839409-00

Sales released in: Austria, Bahrain, Belgium, Bulgaria, Chile, Croatia, Cyprus, Czechia, Denmark, Djibouti, Egypt, Estonia, Ethiopia, Faroe Islands, Finland, France, Germany, Gibraltar, Greece, Hong Kong, Hungary, Iraq, Ireland, Italy, Japan, Jordan, Kenya, Korea (the Republic of), Kuwait, Latvia, Lebanon, Libya, Liechtenstein, Lithuania, Luxembourg, Macao, Malta, Mauritius, Netherlands, New Zealand, Nigeria, Norway, Oman, Portugal, Qatar, Romania, Russian Federation, Sierra Leone, Slovakia, Slovenia, South Africa, Spain, Sudan, Sweden, Switzerland, Syrian Arab Republic, Tanzania, United Republic of, Uganda, United Kingdom of Great Britain and Northern Ireland, Yemen

Country of origin: China

Shelf life: 5 years

Sterilization method: Non-sterile

Production Responsibility: Copious International Inc., Wei 11 Road, Huada Street, New City, Heyuan, Guangdong, 517000, China

Packing information: First packaging layer is a plastic liner/bag. Second layer is a corrugated board transport box.

Is suitable for Tray: No

Find out more at www.molnlycke.com

Mölnlycke Health Care AB, Box 13080, Gamlestadsvägen 3 C, SE-402 52 Göteborg, Sweden. Phone +46 31 722 30 00.
The Mölnlycke trademarks, names and logotypes are registered globally to one or more of the Mölnlycke Health Care Group of Companies.
©2023 Mölnlycke Health Care AB. All rights reserved.

Packing level	Quantity	GS1 Code / UDI-DI	Width x Length x Height	Vol	Weight gross / net
Piece	1	7332551874278			
Transport box	45	7332551874292	330x343x229 mm	25.9 dm3	2.8 / 2.3 kg
Pallet	1890	7332551874285	800x1200x1744 mm		

Material

Animal tissues :	No
Human blood derivatives :	No
Natural rubber latex :	No
Medicinal substances :	No
Phthalates :	No
Polyvinyl chloride :	No

Product Composition Wearing Apparel, Shirts

Product Component	Composition
Main material	Polypropylene SMS (Spunbond Meltblown Spunbond) nonwoven 35 g/m ²
Sewing thread	Polyester, Polyamide (Nylon)

Technical

Dimension

Dimension reference	Dimension text	Dimension value
A	Chest width	69,5 cm
B	Shoulder width	26,5 cm
C	Sleeve length	18 cm
D	Sleeve width	22 cm
E	Length of back piece	80,5 cm
J	Upper Pocket Length	16 cm
K	Upper Pocket Width	15,5 cm
L	Buckle Length	5 cm

Find out more at www.molnlycke.com

Mölnlycke Health Care AB, Box 13080, Gamlestadsvägen 3 C, SE-402 52 Göteborg, Sweden. Phone +46 31 722 30 00.
The Mölnlycke trademarks, names and logotypes are registered globally to one or more of the Mölnlycke Health Care Group of Companies.
©2023 Mölnlycke Health Care AB. All rights reserved.



Disposal instructions

Non-hazardous waste used BARRIER products and sterility barriers should, in the majority of cases, be classified as non-hazardous waste. They contain high amounts of energy and are well suited for incineration. BARRIER products do not contain any hazardous substances that can leach out if the products are land filled. Transport boxes are designed to fit existing recovery systems. The new BARRIER packaging system complies with the Packaging Waste Directive of the European Union.

Storage instructions

Mölnlycke Health Care recommends that BARRIER products are stored under normal storage conditions. All layers of packaging should be kept intact until access to the underlying layers is needed. Storage facilities for products only protected by the sterility barrier should be kept under conditions where low level of particulate air contamination prevail, so that it would not constitute a risk to the patient when the package is opened and the product is used.

Classifications

Regulation type(s)	MDR Class I ns	Locally Regulated	Locally Regulated	Locally Regulated
Intended Purpose :	Scrub Apparels, used by staff as working clothes, are intended to protect the patient from the staff's own bacterial flora by providing a barrier.	Scrub Apparels, used by staff as working clothes, are intended to protect the patient from the staff's own bacterial flora by providing a barrier.	Scrub Apparels, used by staff as working clothes, are intended to protect the patient from the staff's own bacterial flora by providing a barrier.	Scrub Apparels, used by staff as working clothes, are intended to protect the patient from the staff's own bacterial flora by providing a barrier.
MDR Classification Rule :	1			
Conformity Annexes :	IV			
Measuring Function :	No			
Notified body medical devices/PPE :	MPA	Local Authority Jordan	Local Authority MEA	Local Authority Americas

Find out more at www.molnlycke.com

Mölnlycke Health Care AB, Box 13080, Gamlestadsvägen 3 C, SE-402 52 Göteborg, Sweden. Phone +46 31 722 30 00.
The Mölnlycke trademarks, names and logotypes are registered globally to one or more of the Mölnlycke Health Care Group of Companies.
©2023 Mölnlycke Health Care AB. All rights reserved.



Regulation type(s)	MDR Class I ns	Locally Regulated	Locally Regulated	Locally Regulated
Indication for use FDA :	Scrub Apparels, used by staff as working clothes, are intended to protect the patient from the staffs own bacterial flora by providing a barrier.	Scrub Apparels, used by staff as working clothes, are intended to protect the patient from the staffs own bacterial flora by providing a barrier.	Scrub Apparels, used by staff as working clothes, are intended to protect the patient from the staffs own bacterial flora by providing a barrier.	Scrub Apparels, used by staff as working clothes, are intended to protect the patient from the staffs own bacterial flora by providing a barrier.
Regulatory Released :	Austria, Belgium, Bulgaria, Croatia, Cyprus, Czechia, Denmark, Estonia, Faroe Islands, Finland, France, Germany, Gibraltar, Greece, Hungary, Ireland, Italy, Latvia, Liechtenstein, Lithuania, Luxembourg, Malta, Netherlands, Norway, Portugal, Romania, Slovakia, Slovenia, Spain, Sweden, Switzerland, United Kingdom of Great Britain and Northern Ireland	Jordan	Bahrain, Ethiopia, Iraq, Kenya, Lebanon, Libya, Mauritius, Oman, Qatar, Sierra Leone, South Africa, Tanzania, United Republic of, Uganda	Chile

Find out more at www.molnlycke.com

Mölnlycke Health Care AB, Box 13080, Gamlestadsvägen 3 C, SE-402 52 Göteborg, Sweden. Phone +46 31 722 30 00.
 The Mölnlycke trademarks, names and logotypes are registered globally to one or more of the Mölnlycke Health Care Group of Companies.
 ©2023 Mölnlycke Health Care AB. All rights reserved.



Classifications

Regulation type(s)	Locally Regulated	Locally Regulated	Locally Regulated	Locally Regulated
Intended Purpose :	Scrub Apparels, used by staff as working clothes, are intended to protect the patient from the staff's own bacterial flora by providing a barrier.	Scrub Apparels, used by staff as working clothes, are intended to protect the patient from the staff's own bacterial flora by providing a barrier.	Scrub Apparels, used by staff as working clothes, are intended to protect the patient from the staff's own bacterial flora by providing a barrier.	Scrub Apparels, used by staff as working clothes, are intended to protect the patient from the staff's own bacterial flora by providing a barrier.
MDR Classification Rule :				
Conformity Annexes :				
Measuring Function :				
Notified body medical devices/PPE :	Local Authority Egypt	Local Authority South Korea	Local Authority Kuwait	Local Authority APAC
Indication for use FDA :	Scrub Apparels, used by staff as working clothes, are intended to protect the patient from the staffs own bacterial flora by providing a barrier.	Scrub Apparels, used by staff as working clothes, are intended to protect the patient from the staffs own bacterial flora by providing a barrier.	Scrub Apparels, used by staff as working clothes, are intended to protect the patient from the staffs own bacterial flora by providing a barrier.	Scrub Apparels, used by staff as working clothes, are intended to protect the patient from the staffs own bacterial flora by providing a barrier.
Regulatory Released :	Egypt	Korea (the Republic of)	Kuwait	Hong Kong, Macao, New Zealand

Classifications

Regulation type(s)	Non Medical Device
Intended Purpose :	Scrub Apparels, used by staff as working clothes, are intended to protect the patient from the staff's own bacterial flora by providing a barrier.
MDR Classification Rule :	
Conformity Annexes :	
Measuring Function :	
Notified body medical devices/PPE :	PMDA (Japan)
Indication for use FDA :	Scrub Apparels, used by staff as working clothes, are intended to protect the patient from the staffs own bacterial flora by providing a barrier.
Regulatory Released :	Japan

Find out more at www.molnlycke.com

Mölnlycke Health Care AB, Box 13080, Gamlestadsvägen 3 C, SE-402 52 Göteborg, Sweden. Phone +46 31 722 30 00.
 The Mölnlycke trademarks, names and logotypes are registered globally to one or more of the Mölnlycke Health Care Group of Companies.
 ©2023 Mölnlycke Health Care AB. All rights reserved.



Applied standards : The standards presented below is a selection of the most essential standards that are adhered to.

EN ISO 20417, EN 62366, EN ISO 9001, EN ISO 13485, EN ISO 10993-1, EN ISO 10993-5, EN ISO 15223-1, ISO 15223-2, EN ISO 10993-10, ISO 14001

GMDN Code (Global Medical Device Nomenclature)

58382 Scrub suit, single-use, non-sterile

UNSPSC

42131608 Medical staff scrubs

Commodity Code

6210109800 Other garments of nonwoven material

CE Responsibility

Mölnlycke Health Care AB, Gamlestadsvägen 3c, Box 13080, SE-402 52 Göteborg Sweden

Basic UDIDI

733243000000000099KM

Find out more at www.molnlycke.com

Mölnlycke Health Care AB, Box 13080, Gamlestadsvägen 3 C, SE-402 52 Göteborg, Sweden. Phone +46 31 722 30 00.
The Mölnlycke trademarks, names and logotypes are registered globally to one or more of the Mölnlycke Health Care Group of Companies.
©2023 Mölnlycke Health Care AB. All rights reserved.

